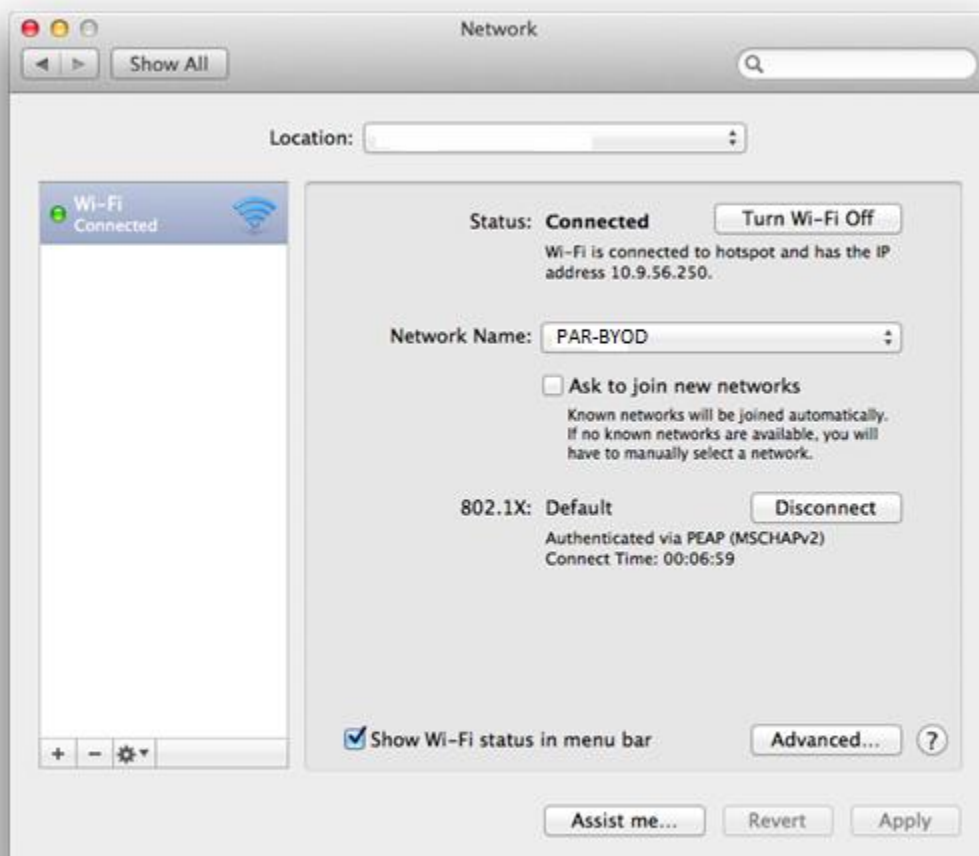


Connecting Macbooks to the College Wi-Fi

Click on the Wi-Fi indicator icon in the menu bar at the top of the screen. Select “Open Network Preferences”.



Click on the “Network Name” drop down menu and select “PAR-BYOD” from the list. Enter your school username and password in the fields provided.



Accept any messages that come up and enter the password for your local account if required. You should now be connected to the College network.